



- Home
- Kitchen and Bathroom Fans
- Commercial fans
- Air Distribution Products
- PDF Catalogs
- About Us
- Contact Us
- CORPORATE BLOG

Mixed flow in-line fans

Vents-US / Commercial fans / In-line centrifugal fans / VK

**In-line centrifugal fans**

**VK**

**VK**

**VKM**

**VKMz**

Centrifugal outdoor fans

Centrifugal fans

Axial fans

Roof fans

Heat recovery ventilators

Accessories

Due to the high powered turbine, VK fans possess advantages of high performance, pressure and created airflow, which allows applying them in ventilation systems with versatile ducting configuration (i.e. for ventilation of several premises) and ensures delivering of high airflow performances with minimum noise generation against high static resistance typically found in ducted ventilation systems.



Simple and reliable corrosion protected fastening system (compete with a fan) allows fan's mounting in any position - vertically or horizontally.

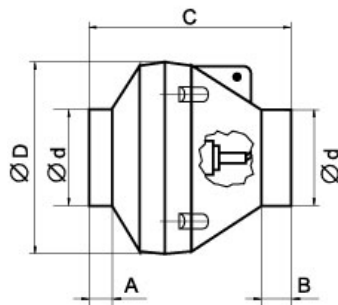
The fan can be removed from the situ for inspection or maintenance without any additional tools.

**VK fans features:**

- Airflow from 168 up to 891 CFM
- Compatible with 4", 5", 6", 8", 10" and 123/8" duct
- Suitable for air stream temperature from 320 F up to 1400 F
- Ball-bearing motor
- 2 years warranty
- Automatic reset, thermal overload protection
- Impeller is balance on the motor shaft
- Silent and safe operation
- Compact overall dimensions
- Housing made of durable plastic
- Reliable capacitor
- Protective grill is designed for assembling with the input coupling flange

Caution! Connection to the electrical supply should be performed only by the qualified specialists in compliance with the mounting instructions.

**Specification**

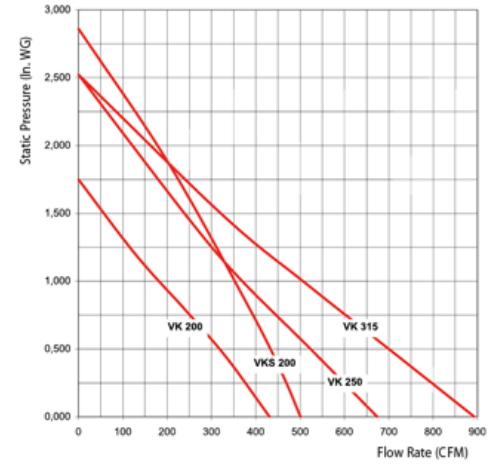
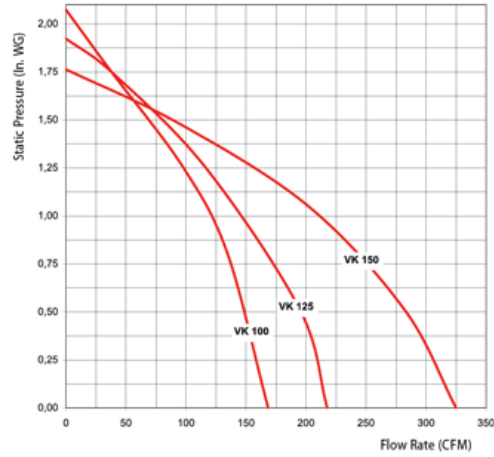


Model	ØD	ØD1	C	A	B
VK 100	3 15/16"	9 13/16"	9 1/16"	1 1/16"	1 1/4"
VK 125	4 15/16"	9 13/16"	8 11/16"	1 1/16"	1 1/4"
VK 150	5 7/8"	11 13/16"	11 1/4"	1 3/16"	1 1/4"
VK 200	7 13/16"	13 3/8"	10 7/8"	1 3/16"	1 3/16"
VKS 200	7 7/8"	13 3/8"	10 7/8"	1 3/16"	1 3/16"
VK 250	9 13/16"	13 3/8"	10 3/8"	1 3/16"	1 3/16"
VK 315	12 3/8"	15 3/4"	10 7/8"	1 1/16"	1 3/16"

Model	RPM	Sones	Duct Dia	Max Watts	Max Amps	CFM v Static Pressure (Ps) Inc. W.G.										Max Ps	Volts
						0"	0,125"	0,25"	0,375"	0,5"	0,75"	1,0"	1,25"	1,5"			
VK 100	3230	2,42	4"	105	0,89	168	168	162	157	151	138	122	99	68	2,07	115	
VK 125	3080	1,11	5"	107	0,92	217	221	214	206	195	171	145	116	83	1,92	115	

VK 150	3190	2,61	6"	111	0,94	325	323	310	297	283	250	211	157	88	1,76	115
VK 200	3000	1,42	8"	111	0,93	432	402	376	333	310	250	180	110	60	1,75	115
VKS 200	3260	3,10	8"	260	2,16	501	485	471	453	434	394	354	312	269	2,86	115
VK 250	2945	1,90	10"	233	1,95	674	633	602	561	521	448	373	320	235	2,51	115
VK 315	3145	4,20	12,4"	231	1,94	892	845	794	750	702	605	509	405	318	2,52	115

**Diagramms of Pressure loss**



Copyright © 2010 Ventilation System. All rights reserved.

11013 Kenwood Rd, Cincinnati, Ohio 45242. Tel: 1-513-348-3853